

7

Find this painting. What or who casts these shadows?

(Correct answer: the swan, the head of the woman on the right, the boat.)



When you look around, you can see a lot of furniture. Can you name everything you see?

8

Cubist furniture is a world rarity. Tourists and scholars from abroad come to admire and study it, as well as Czech cubist art in general. The furniture was custom made in the Prague Art Workshops. Architects used to design it, for example Pavel Janák or Josef Gočár, who is also the architect of this building.

(Correct answer: a bookcase with a glass door, armchairs and a coffee table, a writing desk, a vanity chest, a chair)



9

At the end, there is a task you can do at home. Look carefully at the big cupboard with the glass door. It used to be a bookcase. Design a key, with which you could open its door:



We look forward to seeing you again! PS: Do not forget to look at the sculpture in the corner of the building...

Education Department, Collection of Modern and Contemporary Art, tel: 224 301 003, e-mail: vzdelavani@ngprague.cz



National Gallery in Prague
House at the Black Madonna

The Great Observation

Tasks and puzzles for families with children (3-6 years)

Notice for caregivers: it is necessary to keep a safe distance of at least 30 cm from the artworks.
Thank you.

Start the tour on the second floor and then continue to the third floor. Please read the questions to children who cannot read, and solve the tasks with them. The texts in italics are for you, the caregivers.

Try to find this painting (look on the second floor).

1

What do you see in this painting?

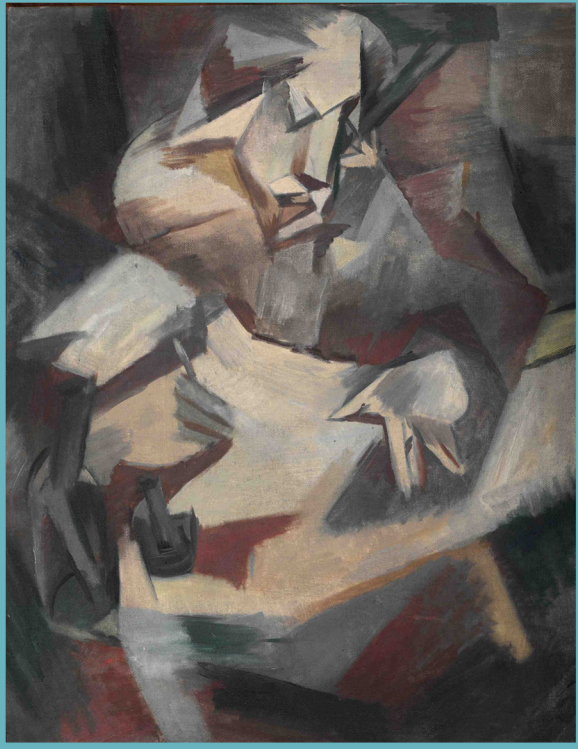


How many people can you see?



Are they women, men or children?

What could be the name of this painting?



2

Come and look a little further on! The painter prepared a puzzle for us to solve. Can you tell what is in the painting? You can circle what you recognize, various body parts...

Cubism is an artistic movement that originated in France at the beginning of the 20th century. The cubists' aim was to capture all three dimensions of real objects on a two-dimensional canvas. To achieve this, they depicted the object from many angles at the same time. For example, a jug in one painting can be seen simultaneously from the side, from above and from below. This way of capturing reality, as well as ignoring the actual colors of the objects, makes it difficult to recognize the subject of the painting.

Painter Emil Filla, who created this and the previous painting, belongs to the most important Czech cubists. He admired the art of the French founders of cubism Pablo Picasso and Georges Braque, and tried to approximate their style.

Find this sculpture. Look at it properly. Can you imitate its pose? Try it! What is the sculpture thinking? Go stand close to it and say aloud what you think is on its mind.

3

Out of all cubists, it was Otto Gutfreund, whose Anxiety you are looking at, who was the most intensely interested in exploring the style's limits in the field of sculpture. We recommend you to have a look at other gems from Gutfreund's cubist period, such as the Cubist Bust or the Embrace, which can also be found on this floor.

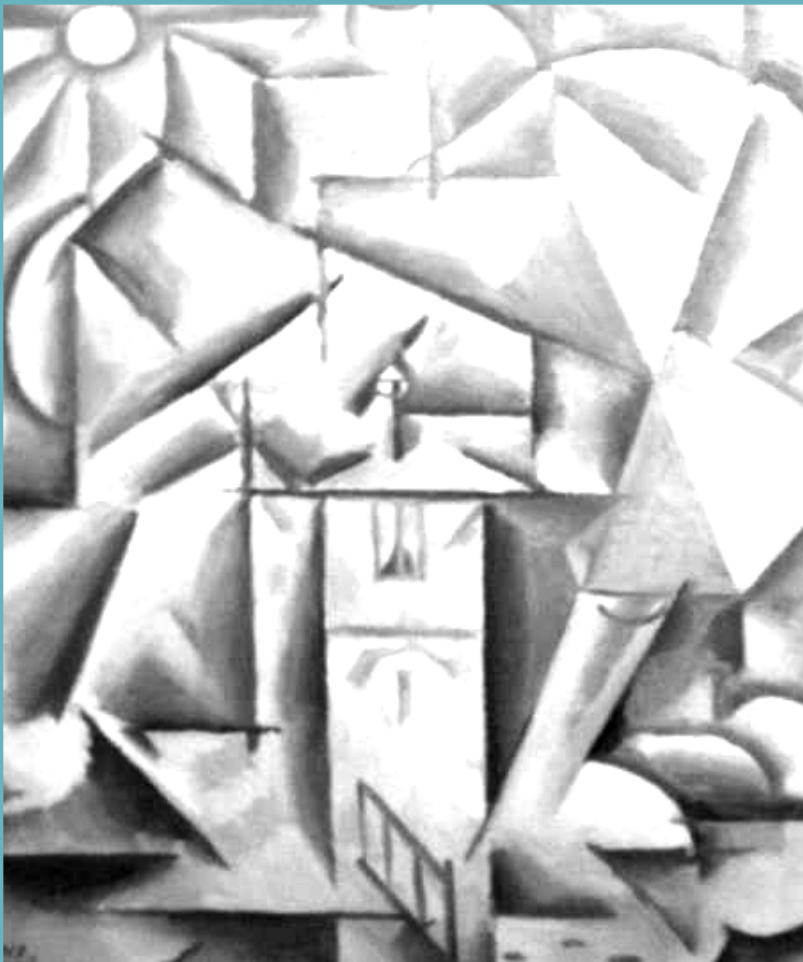


4

Go to the next floor and find this painting. What does it depict? What can you recognize? Who could be living in the house? Draw him/her in the picture.

The painter who painted the previous painting, also wrote and illustrated one well-known book for children called The Tales of Doggie and Moggie. It is one of the most popular books with Czech children. Maybe you and your parents can find its English version in a bookshop...

5



6

Look at the model of the building you are in right now. The building is called the House at the Black Madonna. Can you tell what floor you are on? If you can count: how many floors are there in the building?



The house got its name from the sculpture of the Virgin Mary with Baby Jesus placed in the corner of the building. Why do you think is she called the Black Madonna? You will find the answer when you see the sculpture from the outside of the gallery.